



Email:
sales@everythingwater.co.uk

Web:
everythingwater.co.uk

Product code:
EWVS/1.7

TECHNICAL DATA SHEET

EW Single Volumiser 1.7 l/min

FEATURES

- Water saving 1.70l/min flow rate
- Dual threaded design makes for easy installation
- Spray stream reduces splash
- Domed inlet screen for maximum volumiser life
- Easy installation
- Pressure angle compensating for an even spray
- Conforms to WRAS, NSF, KTW, W270
- Anti-vandal option also available

BENEFITS

- Saves 70% water compared to an 'A' rated aerator
- Simple to fit
- Suitable for both hot and cold applications

KEY FACTS

Pressure range
1 bar – 6 bar

Flow rate @ 3bar
1.70+0.05 l/min

Dimension of the insert
Standard aerator size
(compatible with STD M22
and M24 housings)

Operating medium
Drinking water

Colour
Silver

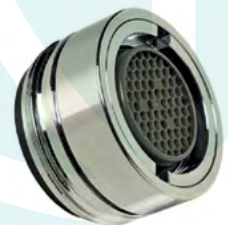
Material
POM

Temperature range
5°C – 65°C

OPTIONAL EXTRA

Anti-vandal collar

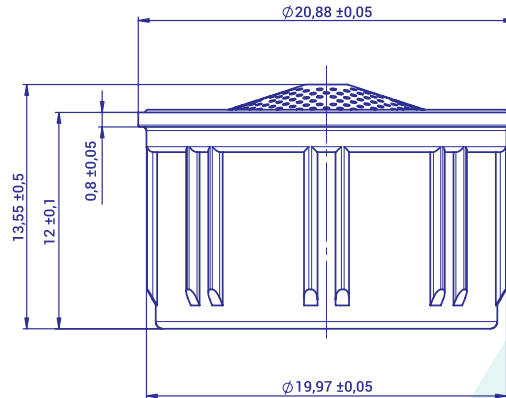
This additional component can come fitted to the tap and prevent unnecessary maintenance and repairs. The collar will prevent users from removing the collar or the insert unless they use the special fitting key.



SAVES OVER 70% WATER • SAVES ENERGY • SAVES MONEY

DIMENSIONS

Atomizer-STD-IT Single Jet.
Dimensions according to EN246



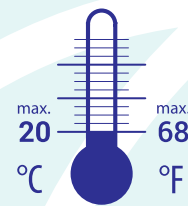
APPLICATIONS AREAS AND OPERATING CONDITIONS



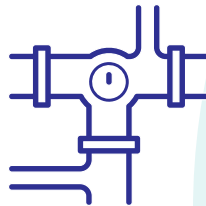
Drinking water only



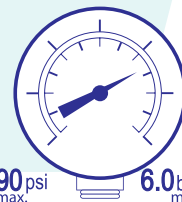
Hand wash



Continuous



Mains water only

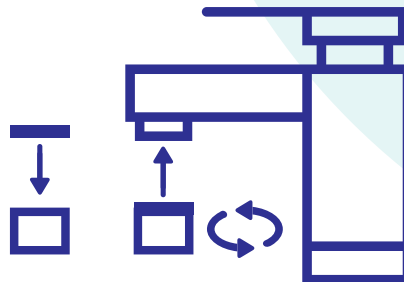


Continuous

EASY INSTALLATION TO FIT COMMON M22 HOUSING

1. Remove old aerator from the faucet. Use a wrench if necessary.
2. Remove any old washers that might be caught inside the spout.
3. Clean the external thread on the spout by hand.
4. Install the new Volumiser onto the spout by hand.
5. Turn on faucet. If leak occurs, tighten more firmly.

For male faucets with external threads



**everything
water**

Email:
sales@everythingwater.co.uk

Web:
everythingwater.co.uk

Product code:
EWVS/17

SAVES OVER 70% WATER • SAVES ENERGY • SAVES MONEY