



Email:  
sales@everythingwater.co.uk

Telephone:  
+44 (0)1442 833 395

Web:  
everythingwater.co.uk

Product code:

EWSV/4.0CF

## TECHNICAL DATA SHEET

# EW Single Volumiser 4.0 L/min Crystal Flow

### FEATURES

- Water saving 4.0 L/min flow rate
- Dual threaded design makes for easy installation
- Crystal flow allows a higher flow rate with minimal splash
- Spray stream reduces splash
- Domed inlet screen for maximum volumiser life
- Easy installation
- Pressure angle compensating for an even spray
- Conforms to WRAS, NSF, KTW, W270

### BENEFITS

- Saves over 33% water compared to an 'A' rated aerator
- Simple to fit

### APPLICATION

Non - splash, Non - Aerated flow to minimise splashback and to de-risk from bacteria spread

### KEY FACTS

**Pressure range**  
1bar - 6bar

**Flow rate @ 3bar**  
4.0 +/-0.05 L/min

**Dimension of the insert**  
Standard aerator size  
(compatible with STD M22  
and M24 housings)

**Operating medium**  
Drinking water

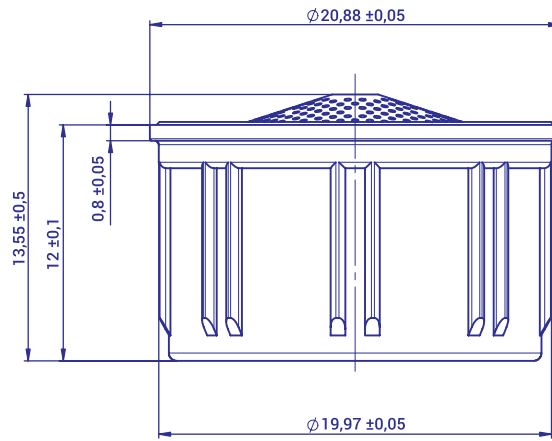
**Colour**  
Grey

**Material**  
POM

**Temperature range**  
5°C-65°C

— SAVES OVER 33% WATER • SAVES MONEY • SAVES ENERGY —

## DIMENSIONS



Atomizer-STD-IT Single Jet. Dimensions are according to EN246

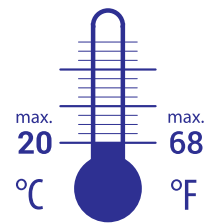
## APPLICATION AREAS AND OPERATING CONDITIONS



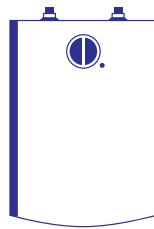
Drinking water only



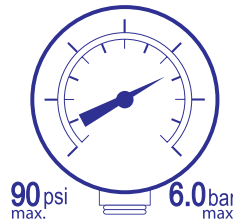
Hand Wash



Continuous



Suitable for  
pressureless water heaters

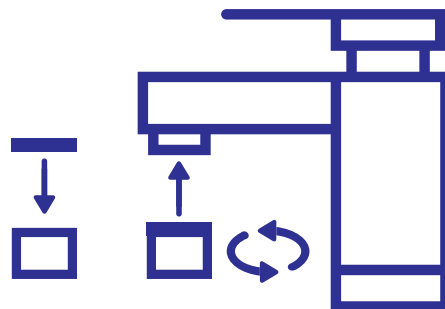


Continuous

## EASY INSTALLATION TO FIT COMMON M22 HOUSING

- 1 Remove old aerator from faucet. Use wrench if necessary.
- 2 Remove any old washers that might be caught inside the spout.
- 3 Clean the external thread on the spout by hand.
- 4 Install the new Drenched Volumiser onto the spout by hand.
- 5 Turn on Faucet. If leak occurs, tighten more firmly.

For male faucets with external threads



Email:  
[sales@everythingwater.co.uk](mailto:sales@everythingwater.co.uk)

Telephone:  
+44 (0)1442 833 395

Web:  
[everythingwater.co.uk](http://everythingwater.co.uk)

Product code:  
EWSV/4.OCF

— SAVES OVER 33% WATER • SAVES MONEY • SAVES ENERGY —