



Email:
sales@everythingwater.co.uk

Telephone:
+44 (0)1442 833 395

Web:
everythingwater.co.uk

Product code:

EWVS/1.7

TECHNICAL DATA SHEET

EW Single Volumiser 1.7 L/min

FEATURES

- Water saving 1.70 L/min flow rate
- Dual threaded design makes for easy installation
- Spray stream reduces splash
- Domed inlet screen for maximum volumiser life
- Easy installation
- Pressure angle compensating for an even spray
- Conforms to WRAS, NSF, KTW, W270
- Anti-vandal option also available

BENEFITS

- Saves over 70% water compared to an 'A' rated aerator
- Simple to fit
- Suitable for both hot and cold applications

KEY FACTS

Pressure range
1bar - 6bar

Flow rate @ 3bar
1.70 +0.05 L/min

Dimension of the insert
Standard aerator size
(compatible with STD M22
and M24 housings)

Operating medium
Drinking water

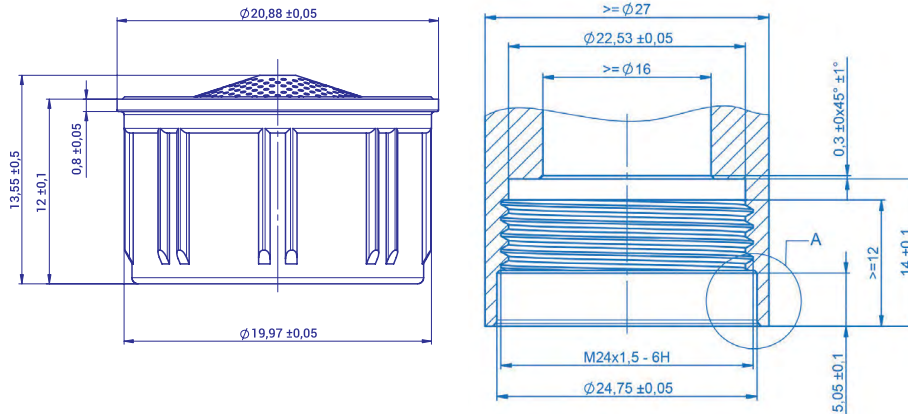
Colour
Grey

Material
POM

Temperature range
5°C-65°C

— SAVES OVER 70% WATER • SAVES MONEY • SAVES ENERGY —

DIMENSIONS



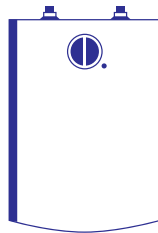
APPLICATION AREAS



Drinking water

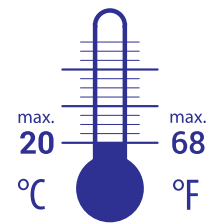


Hand Wash

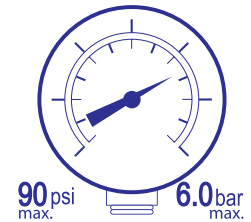


Suitable for pressureless water heaters

OPERATING CONDITIONS



Continuous



Continuous

EASY INSTALLATION TO FIT COMMON M22 & M24 HOUSING

1 Remove old aerator from faucet. Use wrench if necessary.

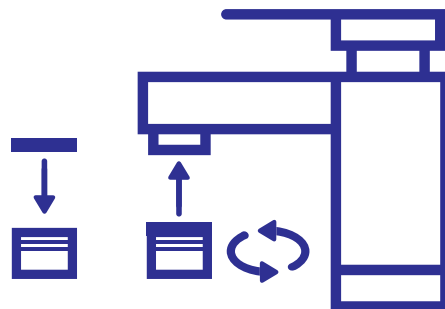
For female faucets with inside threads

2 Remove any old washers that might be caught inside the spout.

3 Clean the threads inside the spout by hand.

4 Install the new Drenched Volumiser onto the spout by hand.

5 Turn on Faucet. If leak occurs, tighten more firmly.



Email: sales@everythingwater.co.uk

Telephone: +44 (0)1442 833 395

Web: everythingwater.co.uk

Product code:

EWSV/17

– SAVES OVER 70 % WATER • SAVES MONEY • SAVES ENERGY